

Appendix V
Cultural and Historic Resources

— This Page Intentionally Left Blank —

Table of Contents – Appendix V – Cultural & Historic Resources

Figures

Figure 1: Patrick County Historic ResourcesAppendix V - 20

Figure 2: Patrick County, Virginia & The Crooked Road Heritage Music TrailAppendix V - 21

Tables

Table 1: Historical Sites in Patrick CountyAppendix V - 1

— This Page Intentionally Left Blank —

APPENDIX V – CULTURAL AND HISTORIC RESOURCES

Table 1: Historical Sites in Patrick County

DHR ID	Property Name(s)
017-0004	Puckett Cabin (Current Name), Puckett Cabin (Historic)
031-5005	Slate Mountain Presbyterian Church & Cemetery (Historic/Current)
031-5051	Freeman Cockerham Barn, Morning Dew Ln (Rt 709) (Historic/Location), Thomas Barn (Current), Wade Barn (Historic)
031-5100	Boyd-Weddle-Keith Cemetery (Descriptive), Weddle Cemetery (Current Name)
033-0269	House, 22600 Franklin Street (Route 40) (Function/Location), Rakes House (Historic)
070-0001	Brick House Tract (Current)
070-0002	Covered Bridge, former Jacks Creek Rd (Rt 615), Smith River (Function/Location), Jack's Creek Covered Bridge (NRHP Listing)
070-0004	Col. Abram Penn Plantation (Historic), Poplar Grove (Historic/Current), Sunnyside (Historic)
070-0005	Reynolds Homestead (NRHP Listing), Rock Spring Plantation (Historic/Current)
070-0006	Cockram Mill (NRHP Listing), Cockram Mill Complex (Current Name)
070-0007	Hopkins, J.E., General Store (Historic/Current)
070-0008	Bank of Critz (Historic), Critz Post Office (Historic/Current)
070-0009	Hardin Reynolds Memorial School, Building (Historic/Current)
070-0010	Store (Historic/Current)
070-0011	Aurora (Historic), Boxwood (Historic), Penn Homestead (Historic), Pink House (Historic)
070-0012	DeHart, Alice Thompson, House (Alleged), House, Near Woolwine (Descriptive)
070-0013	Salmon House (Current)
070-0014	House & Stores, 5616-5636 Woolwine Hwy (Rt 8) (Function/Location), I.M. Akers General Merchandise (Current), I.M. Akers House & Stores (Historic)
070-0015	Cabin, near Charity (Descriptive)
070-0016	Mountain Rose (Historic)
070-0017	Log Cabin, Tuggle Gap (Function/Location)
070-0018	Sheppard's Mill (Historic)

Patrick County Comp Plan – Appendix V - Cultural & Historic Resources

DHR ID	Property Name(s)
070-0019	Corn Crib, Sheppard's Mill (Function/Location)
070-0020	Blacksmith's Cabin (Descriptive)
070-0021	Store, County Line (Descriptive), Store, Route 40 (Function/Location)
070-0022	Pettigo House (Historic)
070-0023	Wood-Cannaday House (Historic)
070-0024	Ross. D. Lee (Captian), House (Historic)
070-0025	Ross Harbour Church (Current)
070-0026	House on Smith River (Function/Location)
070-0027	Bob White Covered Bridge (Historic/Current), Lower Covered Bridge (Historic), Woolwine Covered Bridge (Historic)
070-0028	Sigmon's General Store (Current)
070-0029	House near Fariy Stone Park (Function/Location)
070-0030	Bell Spur Church (Current), Bell Spur Primitive Baptist Church (Historic/Current)
070-0031	House, Peters Creek (Function/Location)
070-0032	House with Porch Chamber (Descriptive)
070-0033	Mitchell Place (Current)
070-0034	Smith Place (Current)
070-0035	Ray, Marion, Place (Current)
070-0036	Creaseys Chapel (Historic/Current)
070-0037	Manse of Central Academy (Historic/Current)
070-0038	Central Academy (Historic/Current)
070-0039	Barn (Historic/Current)
070-0040	Cabin near Poorhouse Creek (Historic/Current)
070-0041	Cabin, near Trent Store (Function/Location)
070-0042	Cabin, near Nettleridge (Function/Location)
070-0043	Hughesville (Historic/Current), John Staples House (Historic)
070-0044	Tatum Place (Historic)
070-0045	Cabins, Connected (Descriptive)
070-0046	DeHart Place (Historic)

Patrick County Comp Plan – Appendix V - Cultural & Historic Resources

DHR ID	Property Name(s)
070-0047	Gas Tank (Descriptive)
070-0048	Store at Meadowfield (Descriptive)
070-0049	House at Carter's Mill (Descriptive)
070-0050	Collins, David, Cabin (Historic)
070-0051	Smith, Council, Cabin (Historic)
070-0052	Hunter Chapel Church (Historic/Current)
070-0053	Doe Run Baptist Church (Historic/Current)
070-0054	Smith River Church (Historic/Current)
070-0055	Hamon Critz House (Current)
070-0056	Griffith House (Current)
070-0057	Fairy Stone State Park (Historic/Current), Fairy Stone State Park Historic District (NRHP Listing)
070-0057-0001	Cabin #1, Fairy Stone State Park (Function/Location)
070-0057-0002	Cabin #2, Fairy Stone State Park (Function/Location)
070-0057-0003	Cabin #3, Fairy Stone State Park (Function/Location)
070-0057-0004	Cabin #4, Fairy Stone State Park (Function/Location)
070-0057-0005	Cabin #5, Fairy Stone State Park (Function/Location)
070-0057-0006	Cabin #6, Fairy Stone State Park (Function/Location)
070-0057-0007	Cabin #7, Fairy Stone State Park (Function/Location)
070-0057-0008	Cabin #8, Fairy Stone State Park (Function/Location)
070-0057-0009	Cabin #9, Fairy Stone State Park (Function/Location)
070-0057-0010	Laundry, Fairy Stone State Park (Current), Picnic Shelter, Fairy Stone State Park (Current), Stable, Fairy Stone State Park (Historic)
070-0057-0011	Campground Bath House, Fairy Stone State Park (Historic), Lower Bath, Fairy Stone State Park (Function/Location)
070-0057-0012	Picnic Shelter #2, Fairy Stone State Park (Function/Location), Picnic Shelters 1 and 2, Fairy Stone State Park (Historic/Current)
070-0057-0013	Custodian's Garage, Fairy Stone State Park (Historic), Garage, Fairy Stone State Park (Function/Location), Park Manager's Garage, Fairy Stone State Park (Current), Superintendent's Garage, Fairy Stone State Park (Historic)

Patrick County Comp Plan – Appendix V - Cultural & Historic Resources

DHR ID	Property Name(s)
070-0057-0014	Custodian's House, Fairy Stone State Park (Historic), Park Manager's House, Fairy Stone State Park (Current), Superintendent's House, Fairy Stone State Park (Historic)
070-0057-0015	Bunkhouse, Fairy Stone State Park (Function/Location), Lodge, Fairy Stone State Park (Current)
070-0057-0016	Log Restroom, Fairy Stone State Park (Function/Location)
070-0057-0017	Allied Cook Shelter, Fairy Stone State Park (Function/Location), Cooling Shelter Campground Area, Fairy Stone State Park (Historic)
070-0057-0018	Fayerdale Hall Conference Center, Fairy Stone State Park (Current), Restaurant, Fairy Stone State Park (Function/Location)
070-0057-0019	Circulation System, Fairy Stone State Park (Function/Location), Hiking Trails, Fairy Stone State Park (Historic/Current)
070-0057-0020	Lake, Dam and Spillway, Fairy Stone State Park (Function/Location)
070-0057-0021	Picnic Areas, Fairy Stone State Park (Function/Location)
070-0057-0022	Cabin Area, Fairy Stone State Park (Function/Location)
070-0057-0023	Campground, Fairy Stone State Park (Historic)
070-0057-0024	Beach Area, Fairy Stone State Park (Function/Location)
070-0057-0025	Fairy Stone State Park--Cabin 10 (Function/Location)
070-0057-0026	Fairy Stone State Park--Cabin 11 (Function/Location)
070-0057-0027	Fairy Stone State Park--Cabin 12 (Function/Location)
070-0057-0028	Fairy Stone State Park--Cabin 13 (Function/Location)
070-0057-0029	Fairy Stone State Park--Cabin 14 (Function/Location)
070-0057-0030	Fairy Stone State Park--Cabin 15 (Function/Location)
070-0057-0031	Fairy Stone State Park--Cabin 16 (Function/Location)
070-0057-0032	Fairy Stone State Park--Cabin 17 (Function/Location)
070-0057-0033	Fairy Stone State Park--Cabin 18 (Function/Location)
070-0057-0034	Fairy Stone State Park--Cabin 19 (Function/Location)
070-0057-0035	Fairy Stone State Park--Cabin 20 (Function/Location)
070-0057-0036	Fairy Stone State Park--Cabin 21 (Function/Location)
070-0057-0037	Fairy Stone State Park--Cabin 22 (Function/Location)
070-0057-0038	Fairy Stone State Park--Cabin 10 (Function/Location)

Patrick County Comp Plan – Appendix V - Cultural & Historic Resources

DHR ID	Property Name(s)
070-0057-0039	Fairy Stone State Park--Cabin 24 (Function/Location)
070-0057-0040	Fairy Stone State Park--Cabin 25 (Function/Location)
070-0057-0041	Bridge 6252, Route 754, Hale Creek (Function/Location)
070-0058	Rocky Knob Recreational Area Cabins (Historic/Current)
070-0058-0001	R.K. Whorley House (Historic), Rocky Knob Recreational Area Building 11 (Current Name), Thomas and Rose Whorley House (Historic), Worley Cabin (Alternate Spelling)
070-0058-0002	Rocky Knob "CCC" Cabin B (Descriptive), Rocky Knob Recreational Area Office/Reception Cabin (Function/Location)
070-0058-0003	Rocky Knob "CCC" Cabin C (Descriptive), Rocky Knob Recreational Area Bath and Utility Cabin (Function/Location)
070-0058-0004	Rocky Knob "CCC" Cabin D (Descriptive), Rocky Knob Cabin 22-23 (Current Name)
070-0058-0005	Rocky Knob "CCC" Cabin E (Descriptive), Rocky Knob Recreational Area Cabin 21 (Function/Location)
070-0058-0006	Rocky Knob "CCC" Cabin F (Descriptive), Rocky Knob Recreation Area Cabin 20 (Function/Location)
070-0058-0007	Rocky Knob "CCC" Cabin G (Descriptive), Rocky Knob Recreation Area Cabin 19 (Function/Location)
070-0058-0008	Rocky Knob "CCC" Cabin H (Descriptive), Rocky Knob Recreational Area, Cabin 17-18 (Function/Location)
070-0059	North Fork Bridge (Current)
070-0060	Stuart, J.E.B., Birthplace (Current)
070-0062	Rhody Creek Bridge (Current)
070-0063	Hazelwood House (Current), House, Route 765 (Function/Location)
070-0064	House, Route 58 (Function/Location), Marshall (Percy) House (Historic/Current)
070-0065	Rorrer (Emmett) House (Historic)
070-0066	Adams (Ralph) House (Current)
070-0067	Shreve (Clyde and Ruth) House (Current)
070-0068	Outbuilding, unpaved road, .3 mile north of U.S. Route 58 (Function/Location)
070-0069	House, west side of Johnson Street, .5 mile north of junction with U.S. Route 58 (Function/Location)
070-0070	Prunty (James) House, No. 2 (Current)
070-0071	Prunty (James) House, No. 1 (Current)

Patrick County Comp Plan – Appendix V - Cultural & Historic Resources

DHR ID	Property Name(s)
070-0072	Fulton Farm, Tenant House No. 2 (Historic)
070-0073	Fulton Farmstead (Historic/Current)
070-0074	Hairston Farmstead (Historic)
070-0075	Penn (Lewis, Jr.) Farmstead (Current)
070-0076	Penn Haven, Overseer's House (Historic)
070-0077	Penn Haven Plantation (Historic)
070-0078	Meadow United Methodist Church (Historic/Current)
070-0079	Morris (Noah) House (Historic)
070-0080	Hiatt Farmstead (Historic)
070-0081	House, north side of U.S. Route 58 at junction with Route 830 (Function/Location)
070-0082	Dalton Farmstead (Historic)
070-0083	Fain House (Historic), House, Rt 694 (Function/Location)
070-0084	Fulcher House (Current), House, Rt 58 (Function/Location)
070-0085	House, north side of U.S. Route 58, .1 mile east of Route 625 (Function/Location)
070-0086	Fulton Farm, Tenant House No. 1 (Historic)
070-0087	Farm, Rt 832 (Function/Location), Trent Farmstead (Historic)
070-0088	Gilley House (Historic), House, Rt 832 (Function/Location)
070-0089	Anthony Farmstead (Historic), Farm, Rt 58 (Function/Location)
070-0090	House, south side of Route 833, .3 mile north of junction with U.S. Route 58 (Function/Location)
070-0091	House, south side of Route 833, .2 mile north of junction with U.S. Route 58 (Function/Location)
070-0092	Midway Store (Historic), Store, Rt 833 (Function/Location)
070-0093	Farmstead, south side of U.S. Route 58, .2 miles west of junction with Route 701 (Function/Location)
070-0094	Farmstead, north side of U.S. Route 58, .25 mile east of junction with Route 701 (Function/Location)
070-0095	Penn Haven, Tenant House No. 2 (Historic)
070-0096	Penn Haven, Tenant House No. 1 (Historic)
070-0098	Williams Cemetery (Current)

Patrick County Comp Plan – Appendix V - Cultural & Historic Resources

DHR ID	Property Name(s)
070-0099	Joel Cock House and Farm (Historic/Current)
070-0100	Agee House (Historic), Jarnbor House (Current), Love House (Historic)
070-0101	Terry Cemetery (Current)
070-0102	House, Route 600 (Function/Location)
070-0103	House, Route 795 (Function/Location)
070-0104	House, Route 602 (Function/Location)
070-0105	Reynolds House (Historic), Shelor House (Current)
070-0106	House, Blue Ridge Parkway (Function/Location), Spangler House (Current)
070-0107	House, Route 602 (Function/Location)
070-0108	House, Route 602 (Function/Location)
070-0109	Dashiell House (Current), House, Route 602 (Function/Location)
070-0110	Shaler Cemetery (Current)
070-0111	House, Route 602 (Function/Location)
070-0112	DeHart Farm (Historic), House, Route 602 (Function/Location)
070-0113	Meadows of Dan Church Cemetery (Current)
070-0114	Meadows of Dan Trading Company (Current)
070-0115	Burnett House (Current), House, Route 795 (Function/Location)
070-0116	Concord Primitive Baptist Church (Historic)
070-0117	Reynolds-Shelor House (Historic)
070-0118	Meadows of Dan High School (Historic)
070-0119	Langan-Barley-Lee House (Historic)
070-0120	Blackard-Spangler House (Historic), Blackwell-Spangler House (Current)
070-0121	House, 1751 Dan River Road (Function/Location)
070-0122	Cassell House and Cemetery (Current), House and Cemetery, Route 632 (Function/Location)
070-0123	House, Route 632 (Function/Location)
070-0124	Jimmy Pack House (Current)
070-0125	House, Route 612 (Function/Location)
070-0126	DeHart House & Harris Cemetery (Historic)

Patrick County Comp Plan – Appendix V - Cultural & Historic Resources

DHR ID	Property Name(s)
070-0127	House, US 58 (Function/Location)
070-0128	House, Route 764 (Function/Location)
070-0129	Cemetery, Route 764 (Function/Location), Wood Cemetery (Current)
070-0130	Hylton's Store (Current), Store, US 58 (Function/Location)
070-0131	House, Route 770 (Function/Location)
070-0132	Cemetery, Route 770 (Function/Location), DeHart Cemetery (Current)
070-0133	House, US 58 (Function/Location)
070-0134	House, US 58 (Function/Location)
070-0135	House, US 58 (Function/Location)
070-0136	House, Route 770 (Function/Location)
070-0137	Alex Cockram Cemetery (Current)
070-0138	House, Route 636 (Function/Location)
070-0139	Guy B. Wood House (Current)
070-0140	House, Route 636 (Function/Location)
070-0141	Dan River Primitive Baptist Church (Current)
070-0142	Boyd House (Current)
070-0143	House, US 58 (Current)
070-0144	Hilltop Restaurant (Current)
070-0145	Fred Clifton Store (Current), Old Larkin Cockram Store (Historic)
070-0146	House, US 58 (Function/Location)
070-0147	Cemetery, US 58 (Function/Location), Clifton Cemetery (Current)
070-0148	Harris Family Cemetery (Current)
070-0149	House, US 58 (Function/Location)
070-0150	Hughes House (Current)
070-0151	Edwards Cemetery (Current)
070-0152	Rakes-Cruise Cemetery (Current)
070-0153	House, Route 610 (Function/Location)
070-0154	House, Route 610 (Current)

Patrick County Comp Plan – Appendix V - Cultural & Historic Resources

DHR ID	Property Name(s)
070-0155	John Henry Cassell House (Current)
070-0156	DeHart Cemetery (Current)
070-0157	Clark House (Current)
070-0158	Lovers Leap Tavern (Historic)
070-0159	John Harbour House and Cemetery (Historic)
070-0160	Gabe Cockram House (Historic), Hermits Cabin (Current)
070-0161	Rorrer House and Cemetery (Current)
070-0162	Harper House and Cemetery (Current)
070-0163	House, Route 805 (Function/Location)
070-0164	Grandma's Place (Current)
070-0165	House, Route 870 (Function/Location)
070-0166	Violet Grace Turner House (Current)
070-0167	House, US 58 (Current)
070-0168	Belcher House and Cemetery (Current)
070-0169	Lawson-Hughes Cemetery (Current)
070-0170	J. D. Hopkins House and Store (Current)
070-0171	House, Route 640 (Function/Location)
070-0172	J. D. Hopkins House and Store (Current)
070-0173	Carl Lawson House (Historic)
070-0174	House, Route 641 (Function/Location)
070-0175	House, Route 641 (Function/Location)
070-0176	Rosabelle Howell Cruise House (Historic)
070-0177	House, Route 641 (Function/Location)
070-0178	House, Route 641 (Function/Location)
070-0179	House, Route 640 (Function/Location)
070-0180	Harold Cummings House (Current)
070-0181	Henry and Ashley Marshall House (Current)
070-0182	House, Route 640 (Function/Location)

Patrick County Comp Plan – Appendix V - Cultural & Historic Resources

DHR ID	Property Name(s)
070-0183	Horace S. Fain House (Current)
070-0184	Wade Buckholts and Megan Phillips House (Current)
070-0185	House, Route 640 (Function/Location)
070-0186	House, VA 8 (Function/Location)
070-0187	House, VA 8 (Function/Location)
070-0188	Ed Sawyer House (Historic)
070-0189	Gov. Gerald Baliles House (Current)
070-0190	Howell Cemetery (Historic)
070-0191	House, US 58 (Current)
070-0192	Underwood-Martin House and Cemetery (Current)
070-0193	House, US 58 (Current)
070-0195	House, US 58 (Current)
070-0196	Clariss Reynolds House (Current)
070-0197	Clarence Rakes House (Current), Tyler Martin House (Historic)
070-0198	House, Route 642 (Function/Location)
070-0199	Martin Cemetery (Historic)
070-0200	Rucker Cemetery (Current)
070-0201	Richard Harston House (Current)
070-0202	Staples Cemetery (Current)
070-0205	House, US 58 (Function/Location)
070-0206	Howell Cemetery (Current)
070-0207	Martin Cemetery (Historic)
070-0208	Fulcher Cemetery (Historic)
070-0209	Williams Cemetery (Historic)
070-0210	Lawson Homeplace and Cemetery (Historic)
070-0211	House, Route 640 (Function/Location)
070-0212	House, Route 621 (Function/Location)
070-0213	Bernard and Smith Cemetery (Current)

Patrick County Comp Plan – Appendix V - Cultural & Historic Resources

DHR ID	Property Name(s)
070-0214	Vipperman-Cockram Cemetery (Current)
070-0215	Cochran Cemetery (Historic)
070-0216	Scott-Spangler Cemetery (Current)
070-0217	Boyd House (Current)
070-0218	Bridge, Blue Ridge Parkway spanning J.E.B. Stuart Hwy (Bus Rt 58) (Function/Location)
070-0219	Frank's Place (Historic)
070-0220	Schwab House (Historic)
070-0221	Patrick County Bridge No. 6070 (Historic/Current)
070-0222	Pinnacles (Current), Pinnacles Hydroelectric Project (Historic/Location)
070-0223	Terry Cemetery (Current)
070-0224	House, Route 600 (Current)
070-0225	Alexander Cemetery (Current)
070-5001	Bridge #1042 (Current)
070-5002	Bridge #1066 (Current)
070-5003	Bridge #1027 (Current)
070-5004	Bridge #6144 (Current)
070-5005	Bridge #1026 (Current)
070-5006	Bridge #1025 (Current)
070-5007	Bridge #1061 (Current)
070-5009	Bridge #1020, Route 58 (Function/Location)
070-5010	Bridge #1085, Route 58 (Function/Location)
070-5011	Bridge #6148, Ararat Hwy (Rt 773), Long Branch, Ararat River (Function/Location)
070-5012	Bridge #6153, Old Mill Road (Route 772), Spoon Creek (Function/Location)
070-5013	Bridge #6308 (Current)
070-5014	Bridge #6251 (Current)
070-5015	Bridge #1016, Route 58 (Function/Location)
070-5016	Bridge #1017, Route 58 (Function/Location)
070-5017	Bridge #1082 (Current)

Patrick County Comp Plan – Appendix V - Cultural & Historic Resources

DHR ID	Property Name(s)
070-5018	Bridge #1058 (Current)
070-5019	Bridge #1022 (Current)
070-5020	Bridge #1005 (Current)
070-5021	Bridge #1037 (Current)
070-5022	Bridge #1004 (Current)
070-5023	Bridge #1003 (Current)
070-5024	Bridge #1002 (Current)
070-5025	Culvert, under Route 830 at the junction with U.S. Route 58 (Function/Location)
070-5026	Culvert, under U.S. Route 58, 0.05 mile west of junction with Route 830 (Function/Location)
070-5027	Craddock House (Current)
070-5028	House, east side of Route 830, .1 mile north of junction with U.S. Route 58 (Function/Location)
070-5029	P.O. Hunley House (Historic)
070-5030	Moss House Tobacco Barn (Historic/Current)
070-5031	Moss House (Historic)
070-5032	Tommy Tatum House (Historic/Current)
070-5033	Tobacco Barn, Route 756 (Function/Location)
070-5034	Tobacco Barn, Route 756 (Function/Location)
070-5035	William Tatum House (Current)
070-5036	House, West of Rt. 697 (Function/Location)
070-5037	Tatum Cemetery (Historic/Current)
070-5038	Mabe Cemetery (Historic/Current)
070-5039	Mayberry Country Store (Current), Mayberry Trading Post (Historic)
070-5040	House, Route 727 (Function/Location)
070-5041	Bryant/Stovall Cemetery (Descriptive)
070-5042	Goblintown Mill (Current Name), Hall's Mill (Historic), Martin's Mill (Historic), Turner's Mill (Historic), Walker's Mill (Historic), Wood's Mill (Historic)
070-5043	Upper Smith River Rockshelter Archaeological District (Current)

Patrick County Comp Plan – Appendix V - Cultural & Historic Resources

DHR ID	Property Name(s)
070-5044	Bluement Presbyterian Church & Cemetery (Historic/Current)
070-5045	Mayberry Presbyterian Church (Historic/Current)
070-5046	Bridge #6123, Stella Rd (Rt 701), Mill Creek (Function/Location)
070-5047	Green Pine Farm (Current), Noah Brammer Farm (Alleged)
070-5048	Great Wagon Road Trace (Historic)
070-5049	Farm, 2659 Cherry Creek Road (Function/Location)
070-5050	House, 2511 Cherry Creek Road (Function/Location)
070-5051	Pleasant View (Historic/Current)
070-5052	Reynolds Homestead Tobacco Barn (Descriptive)
070-5053	Cemetery, Route 691 (Function/Location)
070-5054	House, Route 691 (Function/Location)
070-5055	House, Route 691 (Current)
070-5056	House, Route 691 (Function/Location)
070-5057	House, Route 766 (Function/Location)
070-5058	Barnard Cemetery (Descriptive), Barnard Farm, 2887 Kibler Valley Road (Historic/Location), Barnard Homeplace (Historic/Current), Kibler General Store (Historic), Kibler Historic District (Descriptive), Kibler Post Office (Historic)
070-5059	Bridge No. 6256, Route 773 (Function/Location)
070-5060	House, Jeb Stuart Highway (Function/Location)
070-5061	House, 375 Jeb Stuart Highway (Function/Location)
070-5062	Barn, Jeb Stuart Highway (Function/Location)
070-5063	Shop, Jeb Stuart Highway (Function/Location)
070-5064	House, 507 Jeb Stuart Highway (Function/Location)
070-5065	House, 595 Jeb Stuart Highway (Function/Location)
070-5066	Banks Building, Willis Road (Function/Location)
070-5067	House, 3632 Jeb Stuart Highway (Function/Location)
070-5068	House, 3663 Jeb Stuart Highway (Function/Location)
070-5069	House, 3765 Jeb Stuart Highway (Function/Location)
070-5070	House, 3795 Jeb Stuart Highway (Function/Location)

Patrick County Comp Plan – Appendix V - Cultural & Historic Resources

DHR ID	Property Name(s)
070-5071	House, 1711 Dan River Road (Function/Location)
070-5072	Vesta Pentecostal Church, Vesta Church Road (Function/Location)
070-5073	House, 5050 Jeb Stuart Highway (Function/Location)
070-5074	House, 5122 Jeb Stuart Highway (Function/Location)
070-5075	House, 5263 Jeb Stuart Highway (Function/Location)
070-5076	House, 30 Bear Trail Lane (Function/Location)
070-5077	House, 8 Bear Trail Lane (Function/Location)
070-5078	House, 731 State Shed Road (Function/Location)
070-5079	House, 756 State Shed Road (Function/Location)
070-5080	House, Bear Trail Lane (Function/Location)
070-5081	Farm, Cloudbreak Road (Function/Location)
070-5082	E. D. Clifton Cemetery, Busted Rock Road (Function/Location)
070-5083	House, 7789 Jeb Stuart Highway (Function/Location)
070-5084	House, 11387 Jeb Stuart Highway (Function/Location)
070-5085	House, 270 Turner Brothers Lane (Function/Location)
070-5086	Community Church, 129 Community Church Lane (Function/Location)
070-5087	Store, 12518 Jeb Stuart Highway (Function/Location)
070-5088	Gas Station, Jeb Stuart Highway (Function/Location)
070-5089	House, 83 Trot Valley Road (Function/Location)
070-5090	Bridge #6332, Trot Valley Road (Function/Location)
070-5091	House, 13002 Jeb Stuart Highway (Function/Location)
070-5092	House, 13343 Jeb Stuart Highway (Function/Location)
070-5093	House, 3641 Jeb Stuart Highway (Function/Location)
070-5094	House, 13707 Jeb Stuart Highway (Function/Location)
070-5095	Barn and A. J. Light Cemetery, Jeb Stuart Highway (Function/Location)
070-5096	House, 14372 Jeb Stuart Highway (Function/Location)
070-5097	House, 156 Woolwine Highway (Function/Location)
070-5098	House, 230 Woolwine Highway (Function/Location)

Patrick County Comp Plan – Appendix V - Cultural & Historic Resources

DHR ID	Property Name(s)
070-5099	House, 14918 Jeb Stuart Highway (Function/Location)
070-5100	Shough House, 440 Old Mill Rd (Historic/Location), Shough Mill (Current), Shough Place (Current)
070-5101	Bridge No. 6028, Route 626 (Function/Location)
070-5102	Bridge #1044, Rt 40, tributary, Little Widgeon Creek (Function/Location)
070-5103	Bridge #6303, Dan Valley Farm Rd (Rt 666), Big Branch (Function/Location)
070-5104	Mount Air Hay Barn, Blue Ridge Parkway (Function/Location), Mount Air Property (Historic/Current)
070-5105	Branscombe Barns, Blue Ridge Parkway (Historic/Location)
070-5106	Sally Spangler Property (Historic/Current), Vacant property, off of SC 602 (Function/Location)
070-5108	Mount Air Land Company (Historic), Weddle Property (Historic/Current)
070-5109	Bridge No. 6286, Mill House Road (Route 616) spanning Conners Creek (Function/Location)
070-5110	Bridge No. 6287, Mill House Road (Route 616), spanning Jill Creek (Function/Location), Bridge No. 6287, Route 616 (Function/Location)
070-5111	Bridge #6299, Mill House Rd (Rt 616), Jacks Creek (Function/Location)
070-5112	Scott Grave (Current Name)
070-5113	Hollow History Center (Current Name)
070-5114	Cabin, Poplar Camp Rd (Rt 711) (Function/Location), Rakes Cabin (Alleged)
070-5115	Cabin, 1483 Poplar Camp Rd (Rt 711) (Function/Location), Woods Cabin (Historic)
070-5116	Bridge #6312, Long Branch Road (Route 668), Long Branch (Function/Location)
070-5117	Bridge #6333, Trot Valley Road (Route 640), Tributary, Poorhouse Creek (Function/Location)
070-5118	Mill, Trot Valley Road (Route 640) (Function/Location)
070-5119	Farm, 4682 Elamsville Road (Function/Location), Pendleton Farm (Current Name)
070-5120	J. Midkiff House (Current Name), Mill-related house or building, Mill House Road (Function/Location)
070-5121	Commercial Building, Woolwine Highway and Mill House Road (Function/Location)
070-5122	E. R. Hylton House (Current Name), House and Mill, 1116 Lone Ivy Road (Function/Location)
070-5123	Low Water Bridge, North Fork Road (Route 613), North Fork Smith River (Function/Location)

Patrick County Comp Plan – Appendix V - Cultural & Historic Resources

DHR ID	Property Name(s)
070-5124	Bridge #6255, Ararat Highway (route 773), Branch of Clarks Creek (Function/Location)
070-5125	Bridge #6273, Kibler Valley Road (Route 648), Squall Creek (Function/Location)
070-5126	Ward Compton House, Store & Motel (Historic)
070-5127	Woods Gap Cemetery (Current Name)
070-5128	Cemetery, Woolwine Highway (Function/Location), Houchins-Goods-Snell Cemetery (Current Name)
070-5129	Ann Rogers' Cabin (Current Name), Asa McAlexander House (Historic)
070-5130	Bryant Cemetery (Current Name), Bryant-Scott Cemetery (Descriptive)
070-5131	Lewis Turner-Harden H. Hall Cemetery (Historic), Turner-Hall Cemetery (Current Name)
070-5132	Akers-Bryant Cemetery (Historic), Cemetery, Union Bridge Road (Function/Location)
070-5133	Cemetery, Iron Bridge Road (Function/Location), Martin-Whalen Cemetery (Descriptive)
070-5134	Cemetery, Heidelbach School Road (Function/Location), Richard Martin Cemetery (Descriptive)
070-5135	Cemetery, Heidelback School Road (Function/Location), Jeff Turner Cemetery (Descriptive)
070-5136	Bryant-Pedigo Cemetery (Descriptive), Cemetery, Iron Belt Lane (Function/Location)
070-5137	Cemetery, Thacker Road (Function/Location), Hancock Family Cemetery (Descriptive)
070-5138	Cemetery, Heidelbach Road (Function/Location), Moses Martin Cemetery (Descriptive)
080-5161	Blue Ridge Parkway Historic District (Historic/Current)
080-5161-0069	Bridge, Blue Ridge Parkway, spanning U.S. Route 58 (Function/Location)
080-5161-0070	Bridge, Blue Ridge Parkway, Round Meadow Creek (Function/Location)
080-5161-0086	Bridge, Blue Ridge Parkway, spanning Terry Mill Rd (Rt 614) (Function/Location)
080-5161-0087	Bridge, Blue Ridge Parkway, spanning Pilot View Dr (Rt 608) (Function/Location)
080-5161-0151	Blue Ridge Parkway Building 863 (Descriptive), Rocky Knob Recreational Area Pumphouse (Function/Location)
080-5161-0163	Blue Ridge Parkway, Building 985 (Descriptive), Rocky Knob Campground Wood Storage Shed (Current Name)
080-5161-0192	Bridge, Blue Ridge Parkway, Mayberry Creek (Function/Location)
080-5161-0193	Bridge, Blue Ridge Parkway, spanning Bellspur Rd (Rt 638) (Function/Location)

Patrick County Comp Plan – Appendix V - Cultural & Historic Resources

DHR ID	Property Name(s)
080-5161-0194	Bridge, Blue Ridge Parkway, spanning Pilot View Dr (Function/Location), Dogwood Trail Bridge (Current Name)
080-5161-0226	Rock Castle Gorge Overlook (Current Name)
080-5161-0227	Round Meadow Overlook Parking (Current Name)
080-5161-0228	Puckett Cabin Overlook (Current Name)
080-5161-0255	The Saddle Overlook Access & Parking (Current Name)
080-5161-0256	12 O'Clock Knob Overlook (Current Name), Rocky Knob Trail Parking (Descriptive)
080-5161-0257	Pilot Mountain Overlook (Current Name)
080-5161-0265	Building 481, Blue Ridge Parkway (Descriptive), Groundhog Mountain Comfort Station (Current Name)
080-5161-0328	Rocky Knob Visitor Center (Current Name)
080-5161-0333	Rocky Knob Rock Castle Gorge Trail Shelter (T44) (Descriptive)
080-5161-0335	Rocky Knob Campground Comfort Station, T Loop (Descriptive)
080-5161-0382	Rocky Knob: Springhouse (Function/Location)
080-5161-0388	Groundhog Mountain: Lookout Tower (Function/Location)
080-5161-0389	Puckett Chicken House (Historic)
307-5004	Stuart Uptown Historic District (Historic/Current)
307-5011	House, 213 Buena Vista Avenue (Function/Location)
307-5012	House, 215 Buena Vista Avenue (Function/Location)
307-5014	House, 105 South Main Street (Function/Location)
Town of Stuart	
307-0001	Courthouse Common Soldier (Descriptive), Patrick County Courthouse (Current Name)
307-0002	Clark, John, House (Current), House, East Blue Ridge Street (Function/Location), Staples House (Historic)
307-0003	House, 124 East Blue Ridge Street (Function/Location), Martin, Charley Reid, House (Historic)
307-0004	Harvey, Judge E.J., House (Historic), House, 104 Chestnut Avenue (Function/Location)
307-0005	Akers, Dr. W.C., House and Hospital (Historic), House, East Blue Ridge Street (Function/Location)

Patrick County Comp Plan – Appendix V - Cultural & Historic Resources

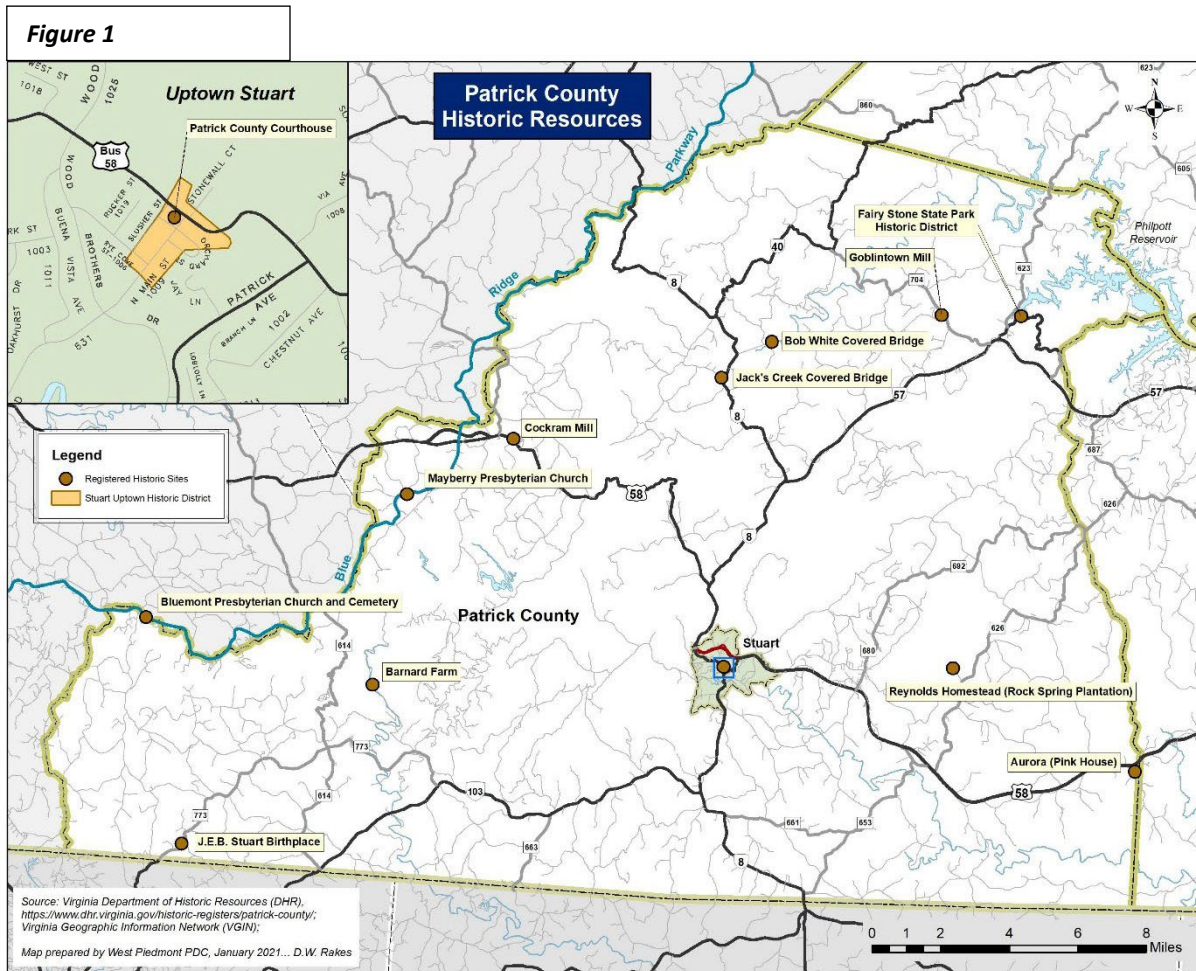
DHR ID	Property Name(s)
307-0006	Angeline Insurance Company (Current), Commercial Building, 104 West Blue Ridge Street (Function/Location), First Patrick County Bank (Historic)
307-0007	House, East Blue Ridge Street (Function/Location), W. H. Wimbish House (Historic), Wimbish-Hopkins House (Historic)
307-0008	Church, Rye Cove Street (Function/Location), Rye Cove Church (Historic)
307-0009	George Mill (Historic), Tom George Mill (Current Name)
307-0010	Nicholson Building (Historic)
307-0011	First National Bank (Historic)
307-0012	Stuart Post Office (Historic)
307-5001	Bridge #1001, South Main Street (Route 8), Mayo River (Function/Location), T. J. George Memorial Bridge (Current)
307-5002	B. Clark House (Historic), House, 310 West Blue Ridge Street (Function/Location)
307-5003	House, 200 West Blue Ridge St. (Function/Location)
307-5005	Stuart Downtown Historic District (Historic/Current)
307-5005-0003	Commercial Building, 300 Patrick Avenue (Function/Location)
307-5005-0004	Commercial Building, 302 Patrick Avenue (Function/Location)
307-5005-0005	Commercial Building, 304 Patrick Avenue (Function/Location)
307-5005-0006	Commercial Building, 310 Patrick Avenue (Function/Location)
307-5005-0007	Commercial Building, 312 Patrick Avenue (Function/Location)
307-5005-0008	Theater, 318 Patrick Avenue (Function/Location)
307-5005-0009	Commercial Building, 322 Patrick Avenue (Function/Location)
307-5005-0010	Commercial Building, 324-336 Patrick Avenue (Function/Location)
307-5005-0011	Bank, 340 Patrick Avenue (Function/Location)
307-5005-0012	Commercial Building, 402 Patrick Avenue (Function/Location)
307-5005-0013	Service Station, 405 Patrick Avenue (Function/Location)
307-5005-0014	Commercial Building, 407 Patrick Avenue (Function/Location)
307-5005-0015	Commercial Building, 410 Patrick Avenue (Function/Location)
307-5005-0016	Commercial Building, 131 S. Main Street (Function/Location)
307-5005-0017	Warehouse, Commerce Street (Function/Location)

Patrick County Comp Plan – Appendix V - Cultural & Historic Resources

DHR ID	Property Name(s)
307-5005-0018	Mill, 101 Commerce Street (Function/Location)
307-5005-0019	Cannery, Commerce Street (Function/Location)
307-5006	Blue Ridge Real Estate, 120 West Blue Ridge Street (Current), House, 120 West Blue Ridge Street (Function/Location), Myron Clark House (Historic)
307-5007	House, 117 West Blue Ridge Street (Function/Location)
307-5008	House, 107 Buena Vista Avenue (Function/Location)
307-5009	Lodge, 111 Buena Vista Avenue (Function/Location), Mountain Home Lodge (Current)
307-5010	Abandoned House, Rye Cove Street (Function/Location)
307-5013	House, 102 Buena Vista Avenue (Function/Location)
307-5015	First Christian Church of Stuart (Historic/Current)

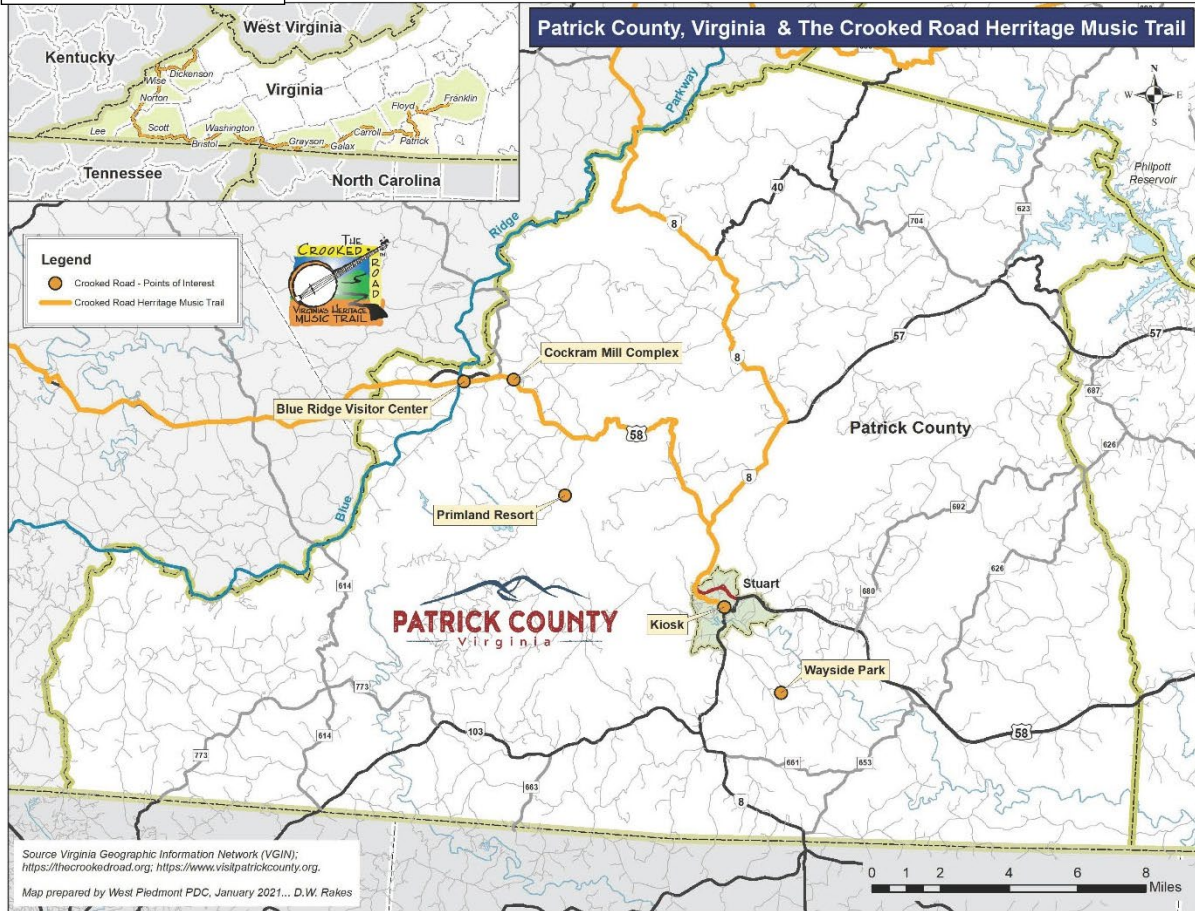
Source: Virginia Department of Historic Resources, January 2021.

Patrick County Comp Plan – Appendix V - Cultural & Historic Resources



Patrick County Comp Plan – Appendix V - Cultural & Historic Resources

Figure 2



— This Page Intentionally Left Blank —