

Patrick County Comprehensive Plan – Community Facilities and Services

Table of Contents – Community Facilities and Services

Sections

Introduction	5-1
Water and Sewer	5-2
Solid Waste Management and Disposal Services.....	5-2
Electrical Service	5-2
Broadband and Communications.....	5-3
Public Safety	5-3
Law Enforcement	5-3
Fire	5-4
Rescue	5-4
Patrick County Fire and EMS	5-4
Public Services.....	5-4
Medical and Community-Based Services	5-5
Patrick County Health Department.....	5-5
Patrick County Branch of Piedmont Community Services	5-5
Patrick County Family Practice.....	5-5
Patrick Multi-Discipline Child Abuse and Neglect Team	5-5
Southern Virginia Child Advocacy Center	5-5
Blue Ridge Therapy Connection.....	5-5
Southern Area Agency on Aging (SAAA)	5-5
Landmark Centers, Incorporated	5-6
Caring Hearts Free Clinic	5-6
Tri-Area Community Health	5-6
Piedmont Access to Health Services (PATHS)	5-6
West Piedmont AIDS Task Force	5-6
Patrick County Department of Social Services.....	5-6
Patrick County Community Food Bank	5-6
Solutions That Empower People (STEP), Inc.	5-6
Piedmont Regional Community Services Board.....	5-6
Southern Virginia Mental Health Institute.....	5-7
Virginia Department for Aging and Rehabilitative Services	5-7

Patrick County Comprehensive Plan – Community Facilities and Services

Patrick County Developmental Center 5-7

West Piedmont Better Housing Coalition (WPBHC) 5-7

Safetyrope, Inc 5-7

The Disability Rights and Resources Center (DRRC)..... 5-7

Education 5-7

 Patrick County Public School System 5-7

Colleges/Workforce Training 5-8

 Patrick & Henry Community College..... 5-8

Governmental Organization..... 5-9

Local and Regional Planning..... 5-9

Figures

Figure 1: Patrick County, Virginia Facilities 5-11

Figure 2: Town of Stuart, Virginia Facilities 5-12

COMMUNITY FACILITIES AND SERVICES

Introduction

Public facilities are the outward physical symbols of services provided by governmental jurisdictions on behalf of the public. As such, they serve an important role in influencing the growth patterns of a particular area. From a regional perspective, the availability of major facilities such as hospitals, colleges, schools, libraries, major parks, and recreation areas is an important factor in attracting people to a region and to a particular locality within that region. And, once drawn to a particular locality, the adequacy of local facilities and services such as schools, fire and police protection, neighborhood parks, and playgrounds is similarly important in determining where a person settles within the chosen locality. In this manner, public facilities affect the location of new persons migrating into Patrick County as well as relocation decisions of persons moving within Patrick County.

Although other factors such as job opportunities also influence the location desires of people, the large commuting flows across jurisdictional boundaries evidenced in this area indicate a strong willingness on the part of the people to work where the jobs are but to live where they want to live. Accordingly, since the provision of public facilities, especially locally-oriented ones, adds to the desirability of a particular area, the location of such facilities can be used by jurisdictions to guide and to stimulate future growth by making some areas more desirable than others.

An additional influence upon the provision of public facilities and services is that they be provided efficiently and equitably. Efficiency can be improved by the multi-use of facilities such as school grounds doubling as neighborhood parks and fire stations containing community meeting rooms as is being done in Patrick County. A second way to improve efficiency is to provide facilities on a multi-jurisdictional or regional basis. Specialized health care facilities are such an example in which a single facility must be centrally located to serve a large supporting service area.

However, not all types of public facilities meet the above requirements; and, in these cases, it is more equitable to decentralize their location. For example, given the choice between a single large park containing many diverse activities and many minor parks each with a few activities, a locality may feel it more equitable to provide the many minor parks in order to reach as many residents as possible. Thus, the provision of public facilities must balance the efficiency of centralized facilities versus the equity of decentralized facilities. In the final analysis, each such case must be carefully decided on its own merits.

In summary, public facilities influence future land use in the following manner:

- At the regional level, the availability of major facilities such as hospitals, schools, colleges, libraries, major parks, and recreation areas is an important factor in attracting people to a particular area.
- At the local level, the adequacy of local facilities such as elementary schools, fire and police protection, and neighborhood parks and playgrounds determine, to a large extent, where people settle.
- The location of facilities, particularly such locally-oriented ones as schools and neighborhood parks, can serve to guide and stimulate future growth rather than merely following the patterns of past growth.

Future facilities must be provided efficiently and equitably. This will result in:

- Multi-use of facilities such as school grounds and neighborhood parks, fire stations and community buildings, parks, and the like;
- Centralization of facilities requiring specialized manpower and/or high initial capital costs in order to have necessary economies of scale;
- Decentralization of facilities not requiring specialized manpower and/or high initial capital costs.

Patrick County Comprehensive Plan – Community Facilities and Services

Not only will the public facilities influence future land use in the above manner but, in turn, future land use will determine the need for public facilities in the years ahead.

The remainder of this section will address the following specific areas: police, fire, and rescue; health; recreation; historic/architectural landmarks; education; human services; industrial parks; and infrastructure and government financing. A community facilities map is included on the following page.

Water and Sewer

The Patrick County Board of Supervisors adopted a countywide water and sewer plan in 1996; the document was developed with the assistance of a consulting firm and the West Piedmont Planning District Commission. This project was funded by an Environmental Protection Agency 604(b) grant through the Virginia Department of Environmental Quality's State Water Control Board. The plan addresses water resources and utilization within the County for residential, commercial, and industrial uses. The "Utilities" section of this plan includes recommendations from the plan.

A municipal water treatment plant is operated by the Town of Stuart, with an operational capacity of 777,700 gallons per day (GPD), which is currently operating at about half of its capacity. This facility serves the Town as well as adjacent areas in Patrick County. The Town constructed a 300,000-gallon glass-lined water storage tank as well as a booster pump at the Patrick County Business Park. Additionally, the Town received a USDA Rural Development grant to construct a similar water storage tank having a 497,000-gallon capacity in 2002; this grant also funded renovations to the water treatment facility.

The Town of Stuart also operates a 600,000 GPD wastewater treatment facility which serves the Town as well as adjacent areas of Patrick County. As is the case with the Town's water treatment facility, this facility operates at about 50 percent of capacity.

Phase 1 of a water and sewer extension resulted in the expansion of these utilities west of the Town of Stuart along U.S. Route 58. In 2010, a public works project was initiated which extended water and sewer lines from the Town of Stuart east to Patrick Springs along U.S. Route 58, as Phase 2 of this project. The \$5 million project was funded by two USDA Rural Development grants, one totaling \$1.46 million and the other totaling \$3.5 million. The approximately seven-mile utility extension serves, in addition to homes and businesses along U.S. Route 58, South Mayo Drive, Spring Road, Twin Ford Loop, Pine Street, Maple Street, Providence Drive, Elementary Drive, D & W Lane, Friendship Lane, and West View Drive, which are located in the Patrick Springs area.

Solid Waste Management and Disposal Services

Patrick County operates a solid waste transfer station at 171 Transfer Station Lane in Stuart that transports area refuse to Waste Management Services out of state. The site operates from 8 a.m. to 5 p.m. on Monday through Friday and from 8 a.m. through 1 p.m. on Saturday. During Daylight Savings Time, the site operates on Wednesday from 8 a.m. through 7 p.m. There is a \$55 per ton tipping fee for non-household waste; \$5 per appliance for white goods; and \$2 for tires up to 20 inches, \$10 for truck tires, and \$18 for farm tractor tires.

Electrical Service

Electric power is supplied to the Patrick County area through a network of 69 KV transmission lines. Appalachian Power Company (APCO), a part of American Electric Power, has a 765 KV circuit system in adjacent Franklin and Henry Counties. This line increased the amount of potential electric power that can be supplied to the Patrick County area through the APCO system. APCO, being made up of numerous divisions spread across Virginia, West Virginia, Ohio, and Indiana, has the capacity to meet the needs of most any industrial processor that might consider locating in the area. Estimates for electric consumption costs are available at the Patrick County Administrator's Office by request.

In the Pinnacles of Dan area of Patrick County, the City of Danville developed a project known as the Pinnacles Hydro-Electric Station, informally known as the "Danville Dam."

Patrick County Comprehensive Plan – Community Facilities and Services

Broadband and Communications

Patrick County is served by a number of telecommunications companies that offer features such as Caller ID with Name, Call Return, Repeat Dialing, Call Waiting, Unlimited Calling, and many others. Some bundled services that are offered include High-Speed Internet and digital television plans. Citizens Telephone Cooperative of Floyd serves a small portion of Patrick County in the Meadows of Dan area. Intermountain services the area around Doe Run in the western part of the County near Carroll County.

Patrick County offers cellular telephone service through several cellular communications companies as well. The County has both 4G and 5G infrastructure in place, with 5G offering significantly higher bandwidth and download speeds than 4G infrastructure.

The County is served by multiple Internet Service Providers, one of which installed 30 miles of fiber optic cable in Patrick County in 1997 to be able to offer Integrated Signal Digital Network (ISDN) service, a high-speed connections network that allows for more efficient use of existing fiber in optic lines. ISDN is commonly used by businesses needing high-speed computer network connections. Two major fiber optic projects in 1997 included installation of major fiber optic lines along the U.S. Route 58 corridor in eastern Patrick County and from Woolwine to Ferrum in neighboring Franklin County.

Patrick County is also served by multiple companies which provide cable and/or satellite television services. Residents in all parts of the County receive satellite dish service while residents mainly in the Stuart, Patrick Springs, and Woolwine areas have access to cable. Patrick County receives local television channels out of Roanoke, VA, and Greensboro, NC. The local access channel, Cable 5, is operated by Mountain View Communications of Stuart and is available on Comcast.

Patrick County has two local sources of information, WHEO-AM 1270 radio and The Enterprise, a weekly newspaper. Other radio reception includes a variety of AM and FM stations broadcasting from Virginia and North Carolina. Daily newspapers include the Martinsville Bulletin, Mount Airy News, Roanoke Times, and Winston-Salem Journal. Virginia regional television is provided by WDBJ 7 and WSLS 10 out of Roanoke. Public radio is provided from WVTF-FM that has local antennae in Southwest Virginia.

There are eight U.S. Post Offices in the County located at: Stuart, Patrick Springs, Critz, Ararat, Claudville, Vesta, Meadows of Dan, and Woolwine. The Stuart facility is a First Class Post Office. Parcel delivery services available in Patrick County are the U.S. Postal Service (must be taken to the post offices), United Parcel Service, and Federal Express.

Public Safety

The safety of the residents of Patrick County is a primary concern in the planning process. For this reason, the police, fire, and rescue services of the County should not only provide adequate coverage, but also rapid response times and satisfactory performance on responses. This appears to be the case in Patrick County, as the County has relatively low crime rates, ten volunteer fire departments, and six volunteer rescue squads.

Law Enforcement

The **Patrick County Sheriff's Office**, located in the Town of Stuart, staffs an E911 Communication Center 24 hours a day to provide fast and coordinated delivery of emergency services to all residents. An Enhanced 911 System has been implemented with state-of-the-art equipment.

As noted above, police protection is provided to the area by the Patrick County Sheriff's Department and the Virginia State Police. Currently, the Patrick County Sheriff's Department has 38 sworn officers; the Virginia State Police Division Office also has sworn personnel which serve the Patrick County area.

In September 2009, ground was broken for construction of a new Patrick County jail to be constructed on a 12-acre Commerce Street site adjacent to Eastern Microfilming/EMI Imaging. According to a project description developed by Thompson & Litton consultants, the 26,645 square-foot, \$9.9 million facility was completed in 2011.

Patrick County Comprehensive Plan – Community Facilities and Services

Fire

Fire protection is provided in the area by nine volunteer **fire departments** and one substation. The fire departments are as follows: Ararat, Woolwine, Meadows of Dan, CCDF (Collinstown, Claudville Dry Pond Five Forks) Stuart, Moorefield's Store, Patrick Henry (near the Henry County line), Patrick Springs, and Fairystone. The substation, which is associated with Ararat Fire Department, is located in Willis Gap. In Patrick County, larger industries maintain fire brigades. If an emergency situation demands resources greater than those available within a local volunteer fire department, other departments within the County are readily available upon request. Continuous training is provided through the Patrick County Fire and Rescue Association. There are approximately 250 volunteers which participate in Patrick County's fire protection program. The County has Class 9 and 10 fire insurance ratings; the Town of Stuart's fire insurance rating is Class 7.

Primary management of hazardous materials incidents are handled by Patrick County Emergency Management and the local fire departments with assistance from the Virginia Department of Emergency Management which maintains several regional hazardous materials teams across the Commonwealth. The team located in Danville serves the County and responds whenever there is a hazardous materials spill. They work closely with assistance from Patrick County Emergency Management and Virginia Department of Emergency Management to coordinate a concentrated effort for removal/control.

The County has approved **mutual aid agreements** with surrounding counties for fire and rescue personnel to cross jurisdictional boundaries to answer calls. This action put into writing an unofficial operating arrangement the localities have had for years.

Rescue

Rescue service is provided by six volunteer **rescue squads** with 24-hour-a-day operation. These squads are as follows: Vesta, Ararat, Smith River (in Woolwine), CCDF (Collinstown Claudville Dry Pond Five Forks), Blue Ridge (in Willis Gap), and Jeb Stuart (in Patrick Springs). All squads have VHF radios and UHF telemetry radios. All squad units are dispatched through the Sheriff's Department. Approximately 150 volunteers participate in Patrick County's rescue services program. The County employs an Emergency Services Coordinator.

Patrick County Fire and EMS

Patrick County initiated a County-supported agency, Patrick County Fire and EMS, in February 2018. Patrick County Fire and EMS is a backup system for the volunteer fire departments and volunteer rescue squads. Patrick County Fire and EMS operates 24 hours a day, seven days per week, with both an Advanced Life Support (ALS) and Basic Life Support (BLS) available on the ambulance. Patrick County Fire and EMS operates from the former adult education facility, located on East Blue Ridge Street in Stuart.

Public Services

Pioneer Community Hospital closed in 2017, however, there is a plan to improve healthcare delivery in the County via a community coalition facilitated by Healthy Patrick County; Healthy Patrick County is led by the Patrick County office of the Virginia Department of Health (VDH). The plan to enhance health care delivery in the County is three-pronged. One component includes establishing a Federally Qualified Health Center to address the need for primary care in the County. A second component of this effort involves expansion of specialty services in the County by developing an agreement with a nearby hospital which administers a Graduate Medical Education program and would allow its residents/fellows to practice in the County. The third, and most significant component, would be to incorporate telehealth access in the County to eliminate the need for residents to travel for many of their medical appointments. This would be accomplished via a multi-phased approach to expand broadband infrastructure to the communities of Woolwine, Patrick Springs, Meadows of Dan, Claudville, and Ararat. Part of the plan would involve the use of rescue squad facilities in the County as locations at which telehealth visits could be accommodated in the event residents do not have access to broadband/high-speed internet from their homes.

The area is in close proximity to other locations which also provide specialized health services including the Memorial Hospital of Martinsville-Henry County (SOVAH Health-Martinsville), Lewis-Gale Medical

Patrick County Comprehensive Plan – Community Facilities and Services

Center (Salem), Roanoke Memorial Hospital (Roanoke), Carillion Roanoke Community Hospital, Wake Forest Baptist Hospital (Winston-Salem, NC), Duke University Hospital (Durham, NC), and Forsyth Hospital (Winston-Salem, NC). The area is also served by the Tri-Area Health Clinic nearby in the Village of Ferrum as well as a number of home health service agencies based in Stuart and Meadows of Dan.

To help address the closure of rural hospitals and medical facilities throughout the U.S. and Virginia, telehealth has emerged as a solution, particularly to those individuals who lack access to nearby medical services.

Medical and Community-Based Services

This section briefly summarizes the various health and wellness and other community-based services available to Patrick County residents. A more comprehensive discussion of these services can be found in the appendix to this chapter.

- **Patrick County Health Department** Services provided by the clinics include a variety of health-related activities including immunization, family planning; Medicaid screening, Bureau of Crippled Children's clinic, on-site sewage disposal permits, environmental health, communicable disease investigations, restaurant inspection; home health services, and many other services. The Patrick County Health Department is a branch of the Henry County-Martinsville Health Department which is situated within the West Piedmont Health District, comprising Franklin, Henry, and Patrick Counties, and the City of Martinsville. The headquarters office for this Henry County-Martinsville Health District is located at 295 Commonwealth Boulevard, Martinsville, while a satellite location is located at 106 Rucker Street in Stuart. *Contact information: (276) 693-2070.*
- **Patrick County Branch of Piedmont Community Services (PCS)**, which helps with mental health problems of any severity, ranging from mild nervousness, to marriage and child discipline difficulties, to severe depression and suicidal fears. *Contact information: <https://piedmontcsb.wixsite.com/piedmontcommunitysvc>. (276) 694-4361.*
- **Patrick County Family Practice** serves as a primary care provider for the Town of Stuart and Patrick County. The Patrick County Family Practice functions as both a traditional family medical practice as well as an urgent care facility by providing preventative care, administering immunizations, as well as more advanced services. Services are provided on a sliding scale, and the Practice operates two facilities in the Town of Stuart, with one at 18877 Jeb Stuart Highway and at 835 Woodland Drive.
- The **Patrick Multi-Discipline Child Abuse and Neglect Team** provides community education and preventive programs in regards to child abuse and neglect as well as sponsoring a dental program for indigent children.
- Currently, the Stuart site of the **Southern Virginia Child Advocacy Center** offers forensic interviews of children who are believed to be victims or witnesses of abuse or neglect. The interviews are conducted in a child-friendly atmosphere by unbiased individuals who are trained to use legally sound and developmentally appropriate interviewing methods. The Stuart site also offers clinical services (mental health treatment) to children exposed to trauma, their siblings, and their non-offending caretakers. Referrals for both forensic interviews and clinical services must be made through law enforcement, social services, or any other member of CART (Child Abuse Response Team). The Southern Virginia Child Advocacy Center is located at 103 W Blue Ridge Street in Stuart.
-
- The 190-bed **Blue Ridge Therapy Connection** in Stuart provides long-term care facilities for the elderly and disabled. *Contact information: <https://www.blueridgetherapyconnection.com/>. (276) 694-7161.*
- The **Southern Area Agency on Aging (SAAA)** serves the Cities of Martinsville and Danville and the Counties of Franklin, Henry, Patrick, and Pittsylvania from its office in Martinsville. The agency promotes maximum independence for persons age 60 and older by providing services that will

Patrick County Comprehensive Plan – Community Facilities and Services

assist older persons live independently in their own homes. *Contact information:* <https://www.southernaaa.org/>. (800) 468-4571 or (276) 632-6442.

- The **Landmark Centers, Incorporated**, an assisted living facility, is a 50,000-square-foot facility, which will accommodate up to 75 residents, offers 24-hour nursing assistance to residents. It is designed to serve ambulatory persons who may need some help with daily activities but not the specialized medical care provided in a nursing facility. *Contact information:* <https://www.thelandmarkctr.com/>. (276) 694-3050.
- The **Caring Hearts Free Clinic** serves those with no insurance who are out of work, at 300 percent or below the Federal poverty level, or are students with no insurance. *Contact information:* <https://www.caringheartsclinic.org/>. (276) 694-3410 (Ext. 1).
- **Tri-Area Community Health** is a federally-funded medical center offering primary care and an on-site pharmacy. The facility is based in Carroll County, serves a three-county area including Patrick County, and operates a facility in Ferrum in Franklin County. *Contact information:* <https://triaareahealth.org/locations/ferrum/>. (866) 942-0401.
- **Piedmont Access to Health Services (PATHS)** is a non-profit health organization whose mission is to provide health care to residents of South-Central Virginia regardless of an individual's ability to pay. *Contact information:* <https://www.pathsinc.org/index.php>. (276) 632-2966 (Martinsville location).
- The **West Piedmont AIDS Task Force** serves the City of Martinsville and the Counties of Franklin, Henry, and Patrick. Its office in Martinsville provides community education and training, coordinates services for people with AIDS and their families, provides a buddy system for people with AIDS, and offers support groups for HIV-positive persons, families, or friends.
- The **Patrick County Department of Social Services**, provides a variety of services including Child Protective Services, Foster Care, Adoption, Medicaid, Food Stamps, Temporary Assistance to Needy Families (TANF), State and Local Hospitalization (SLH), Heating and Cooling Assistance, Emergency Food and Shelter, among other programs. *Contact information:* (276) 694-3328.
- The **Patrick County Community Food Bank** distributes food boxes on the third Wednesday of each month at the site of the former Red Cross trailer located at 108 Commerce Street in Stuart. Food boxes are delivered by authorized volunteers to approved disabled or homebound individuals. More information is available through the Food Pantry. *Contact information:* (276) 694-6300.
- **Solutions That Empower People or "STEP"** Inc. employs holistic, sustainable strategies that address *both* the symptoms and root causes of poverty at significant milestones throughout each stage of life. The programs STEP administers include education, youth services, Virginia Homeless Solutions Program, Re-Entry, housing and weatherization services, financial services, and senior services. *Contact information:* <https://www.stepincva.com/>. (276) 694-2239.

A variety of mental health/intellectual disability services are available to County residents, some of which have been outlined previously in this section--"Public Services." The **Piedmont Regional Community Services Board** provides a program of mental health, intellectual disability, and substance abuse services to residents of Franklin, Henry, and Patrick Counties and the City of Martinsville. The following services are provided through the Board:

- **Piedmont Community Services**, based in Martinsville, has a satellite facility in Patrick Springs to provide mental health services to residents in Patrick County.
 - **PARC Workshop (Patrick Association for Retarded Citizens)** was founded in 1973 for the development of persons having intellectual disabilities.
 - **CONTACT** is a 24-hour crisis intervention and counseling helpline with an office in Martinsville.

Patrick County Comprehensive Plan – Community Facilities and Services

- **Infant and Toddler Connection of the Piedmont** --a prevention/early intervention program serving children birth to three years of age, diagnosed as handicapped or at risk for development delay.
- The **Patrick Henry Drug and Alcohol Council, Incorporated**, provides individual and group counseling for drug clients as well as crisis intervention, information, and referral services.
- The **Southern Virginia Mental Health Institute**, located in Danville, is a regional facility of the Commonwealth of Virginia Department of Behavioral Health Developmental Services that serves member localities, including Patrick County, within the Central Virginia, Southside, and West Piedmont Planning Districts. This 100-bed hospital, built in 1976 on a 15-acre tract near the Danville Community College campus, provides short-term hospital services. Upon release, patients are referred to their local mental health carrier for continued treatment.
- The **Virginia Department for Aging and Rehabilitative Services**, with an office in Martinsville, provides a variety of services to individuals with handicaps or disabilities which would prevent or interfere with their employment, such as vocational rehabilitation, services that address needs of disabled older or vulnerable adults, and other services. *Contact information:* <https://www.vadars.org/default.htm#gsc.tab=0>. (276) 634-3633.
- The **Patrick County Developmental Center** is a private, non-profit organization for disabled persons 18 and over. The organization offers a variety of services including transportation, day treatment programs, and instruction of individual living skills. *Contact information:* (276) 694-6047.
- The **West Piedmont Better Housing Coalition (WPBHC)** serves Franklin, Henry, Patrick, and Pittsylvania Counties and the Cities of Danville and Martinsville in southwest Virginia with a full continuum of care to address homelessness needs in the region. *Contact information:* <https://www.westpiedmontcontinuum.com/>.
- **Safetyrope, Inc.** is a non-profit organization that provides financial assistance to those residents of Patrick County whose needs cannot or are not being met from other sources. Safetyrope assists those who do not qualify for government assistance and strive to support themselves, but have difficulty in obtaining the necessary comforts, such as basic needs and adequate medical and educational services in particular. *Contact information:* (276) 694-0249.
- **The Disability Rights and Resources Center (DRRC)**, based in Rocky Mount and having an office at Patrick & Henry Community College, is a non-residential based facility serving disabled individuals in Franklin, Patrick, Pittsylvania, and Henry Counties, as well as Danville and Martinsville. *Contact information:* <https://drrcva.org/>. (540) 482-0752.

Education

Education is a vital key in job preparation and attainment and a top priority to Patrick County residents. An educated population not only benefits individuals but also can be an influential tool in the recruitment of well-paying high technology industries to the County. With this in mind, Patrick County should emphasize education not only in its public school system, but also in its job training programs.

Patrick County Public School System operates six elementary schools and one consolidated high school. The primary schools and their September 2020 student memberships, based on Virginia Department of Education (DOE) data, are as follows: Blue Ridge Elementary (247), Hardin Reynolds Memorial Elementary School located in Critz (199), Meadows of Dan Elementary School (430), Patrick Springs Primary School (253), Stuart Elementary School (357), and Woolwine Elementary School (141). Patrick County High School, with a September 2020 student membership of 890, is located in Stuart. These figures include all students including those in pre-kindergarten to Grade 12. The Patrick County School System employs approximately 375 personnel.

Patrick County Comprehensive Plan – Community Facilities and Services

In addition to traditional college education, more certification-based workforce preparedness efforts have become prevalent in the Region in recent years, and Patrick County is no exception. In a collaborative effort with Patrick County High School, Patrick & Henry Community College (P&HCC) enables qualifying students to participate in dual-enrollment study during their junior and senior high school years.

Colleges/Workforce Training

Patrick & Henry Community College (P&HCC) is located in Henry County on a 137-acre campus which includes an Administrative and Classroom Building, a learning Resource Center, a Gymnasium/Auditorium, a Fine Arts Center, the A. L. Philpott Technical Center, the F. Burness Frith Economic Development Center, and a Motor Sports facility. The A. L. Philpott Technical Center houses a Computer-Integrated Manufacturing Laboratory. The A. L. Philpott Manufacturing Research Center, an industrial research center, utilizes the college's Computer-Integrated Manufacturing facility and provides a means of studying ways to aid Southside Virginia industries. The Center serves Southside Virginia which consists of 20 counties, from Patrick in the west to Southampton in the east, and five cities within the region. The F. Burness Frith Economic Development Center is a facility dedicated to workforce training and development programs to promote economic development initiatives in the region. The P&HCC-Arrington HP Engine Academy provides training for the development of motor sports engineering and is the only facility of this type in the Virginia Community College System.

As noted above, a dual-enrollment program enables qualifying Patrick County High School juniors and seniors to earn college credit through P&HCC, as part of a program known as "D-Squared".¹ This dual-enrollment program continues to be tuition-free.

The Academic and Student Development Services department is the academic arm of P&HCC. Services and programs provided through this department include: Applied Science & Engineering Technology; Arts, Science & Business Technology; Continuing Education & Workforce Development; Learning Resource Center; and Student Development Services. Services and programs offered include:

- The programs of study offered through **Advanced Manufacturing and Skilled Trades** are generally those that prepare students to enter the workforce directly after completion. Associate of Applied Science degrees (AAS) provide two years of instruction to develop knowledge and skills leading to employment of career advancement in specialized fields.
- Programs offered through the **Arts** enable students to earn Associate of Arts & Science degrees in Performing Arts and Visual Arts, while Career Studies Certificates are available in Arts Studies and Theatre Arts.²
- The **Business** Program of Study offers students Associate of Applied Science degrees in Administrative Support Technology, Accounting, Management, Legal Assisting, and Management Specializations in Entrepreneurship/Small Business and Culinary and Hospitality Management; an Associate of Arts and Sciences Degree is also available for Business Administration.
- The Program of Study in **Information Technology (IT)** offers Associate of Applied Science degrees in Information Systems Technology, specializations in Accounting Information Systems, Game Design and Development, and Internet Services; such a degree is also offered for Information Systems Technology. An Associate of Arts & Sciences degree is also offered for a General Studies Specialization in Information Technology.
- P&HCC's **Health Sciences & Public Safety** Program of Study offers Associate of Applied Science degrees, Associate of Arts & Sciences Degrees, Certificates, and Career Studies Certificates in various health and criminal justice-related areas of specialization.

¹ "Patrick County High School Program of Studies 2020-2021." Patrick County High School. Retrieved October 7, 2021. Pg. 44.

² "Program of Study." Patrick & Henry Community College. 2021.
<http://catalog.patrickhenry.edu/content.php?catoid=4&navoid=186>.

Patrick County Comprehensive Plan – Community Facilities and Services

- The **Transfer Studies & Education** Program of Study includes Associate of Applied Science degrees as well as Associate of Arts & Sciences degrees in Early Childhood Development, General Studies Specializations in Teacher Education Preparation and Human Services, General Studies, and Science.³
- Services and programs offered through the **Learning Resource Center** (LRC) include the Lester Library, tutoring, printing, the Learning Laboratory, the Writing Center, the Byrd Math Lab, the LRC Testing Center, Distance Learning, the EAB Navigate Progress Report (Alert) System, Resources for Students with disAbilities., and Student Support Services (services for first generation and low-income students, and students with disabilities).⁴

In August 1997, the first phase of the multi-faceted Patrick County Community Center became a reality when the satellite branch of Patrick & Henry Community College opened for fall classes. While P&HCC had offered classes to County residents for many years at various locations, the opening of the local center marked the first time there had been an actual facility designated for college classes--and the County's first institution of higher learning. The multi-purpose facility, located at DeHart Park in Stuart, provides offices for the County recreation department, a gathering place for senior citizens and other organizations, a training site for fire departments and rescue squads, and a recreation center.

Please see the appendix to this chapter for a more thorough discussion of educational resources in the County.

Governmental Organization

Patrick County is governed by an elected Board of Supervisors who are chosen from five voting districts. The qualified voters of each district elect one representative for supervisor for a four-year term with elections being held on a staggered basis in order to provide continuum in the governing of the County. The Board has authority over county administration, budgets, taxation, borrowing, and accounting. The Board meets publicly once a month.

Voters also elect the Commonwealth's Attorney, Commissioner of Revenue, Sheriff, and Treasurer for four-year terms, and the Circuit Court Clerk for an eight-year term. The General Registrar is appointed by the Electoral Board, which is itself appointed by the Circuit Court Judge for three-year terms. The Board of Supervisors employs a county administrator, who is responsible for the day-to-day affairs of the County. As of 1995, the Patrick County School Board became an elected board. Prior to that time, the School Board was appointed by the Board of Supervisors.

The county seat of Patrick is located in Stuart. Stuart is an incorporated town governed by a mayor and a town council of five members all of which are elected to four-year staggered terms. The Town Mayor appoints the Town Clerk.

Patrick County Government is responsible for both the day-to-day activities in the County such as fire and police protection, as well as the development and installation of appropriate infrastructure to ensure a continuum of services in the County and to attract additional investment. For these activities, the County relies upon tax revenue, as well as a variety of grants available through numerous agencies such as the Virginia Department of Transportation (VDOT), the Appalachian Regional Commission (ARC), and the Virginia Tobacco Region Revitalization Commission, among others.

Local and Regional Planning

The Patrick County Planning Commission has five members, all County citizens appointed by the Board of Supervisors. Patrick County is currently working on a zoning ordinance. Patrick County is a member of the West Piedmont Planning District Commission, one of 21 planning districts in Virginia.

³ "Programs of Study." Patrick & Henry Community College.

⁴ "Learning Resource Center." Patrick & Henry Community College. 2019.
<http://catalog.patrickhenry.edu/content.php?catoid=4&navoid=181>.

Patrick County Comprehensive Plan – Community Facilities and Services

Patrick County, unique to many rural counties, is postured to endure a period of sustained growth and development. With pro-active leadership and positive indicators from the education, health care, and business/industry sectors, the County is on course for a fortuitous future. However, continued planning and vision are necessary to achieve the potential that exists in Patrick County. The impending upgrades to U.S. Route 58 between the Town of Stuart and Meadows of Dan will undoubtedly increase the attractiveness of business and residential investment in the County. Some of the challenges faced by the County include the closure of Pioneer Community Hospital, the lack of a north/south transportation corridor, and a concentration of shopping and entertainment opportunities. The lifestyle Patrick County offers, however, including pastoral countryside, breathtaking scenery, and a return to a simple, uncomplicated lifestyle such as had been experienced in days gone by, will likely remain a very strong asset for the County.

Figure 1 shows an overall map of community facilities within Patrick County, while Figure 2 shows community facilities within the Town of Stuart.

Patrick County Comprehensive Plan – Community Facilities and Services

Figure 1

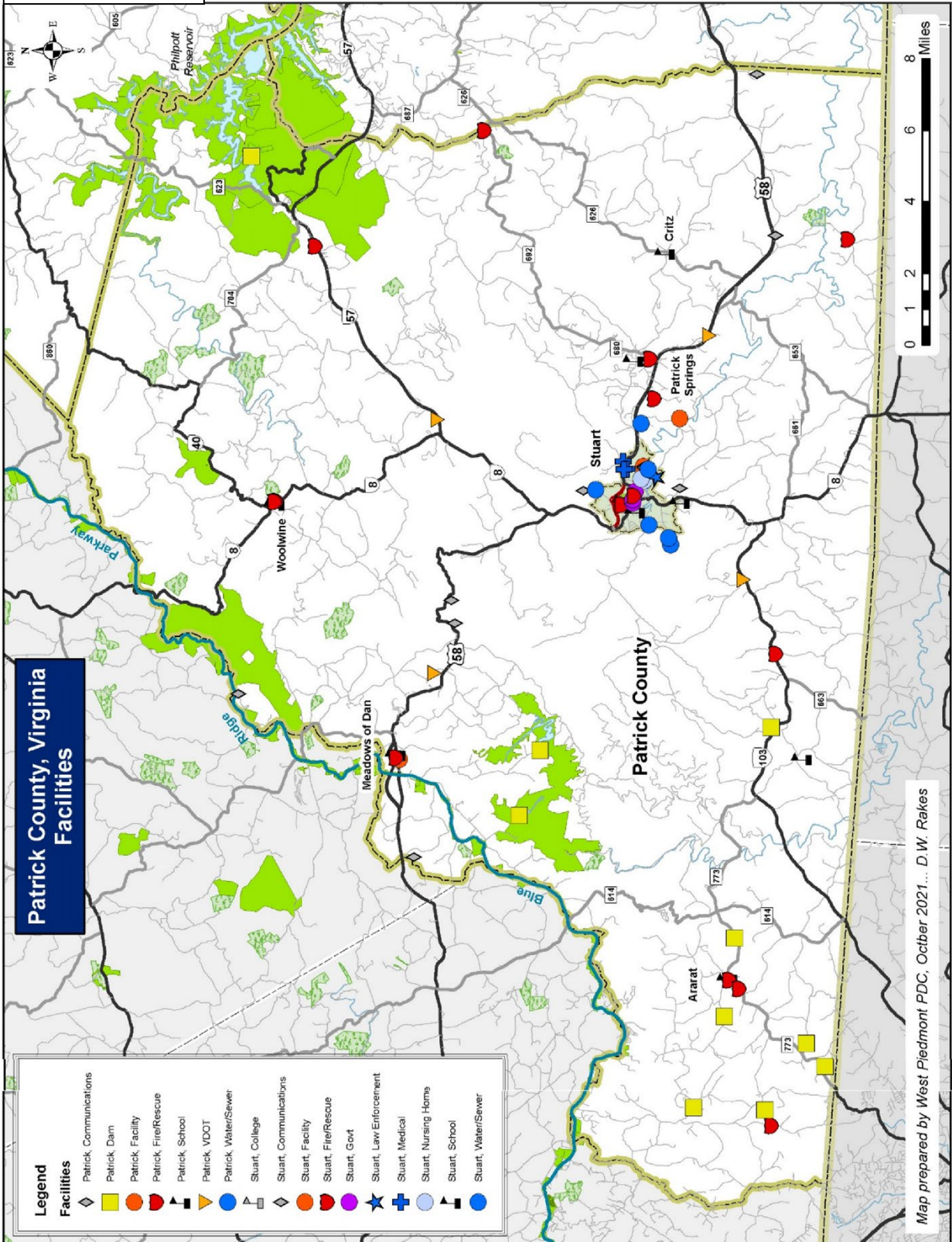


Figure 2

